

[ Museums  
Australia ]

.....  
***Annual  
Report  
2014***

[ Museums  
Australia ]

.....  
***Annual  
Report  
2014***



**Australian Government**

Museums Australia operates with the generous support of the Australian Government, National Museum of Australia, Museum Victoria, Western Australian Museum, ICOM Australia, and Link Digital, as well as individual members who have made generous donations.

**Museums Australia Incorporated**

PO Box 266

CIVIC SQUARE ACT 2608

Telephone 02 6230 0346

Facsimile 02 6230 0360

ABN 83 048 139 955

Auditor

**Accountability**

PO Box 776

Mitchell ACT 2911

Telephone 0407 407 776

ABN 65 119 369 827

Designed by Selena Kearney

Production coordination: Stephanie Hamilton

Printed by Bytes n Colours, Canberra

All images in this Museums Australia Annual Report 2014 have been sourced and reproduced with the permission of the owner/s. If you have any questions about the images reproduced herein, please contact the Museums Australia National Office on 02 6230 0346.

.....  
**Table of Contents**

National President's Introduction	4
National Director's Introduction	6
National Council 2013—2015	7
About Museums Australia	7
Branches	11
National Networks	19
Membership	22
National Conference	24
Awards	26
Communications	28
Partnerships	28
Financial Statements	30
Organisational Members	28

## ..... **National President's Introduction**

This has been a year of significant change for MA at many levels. Most significantly, the end of 2014 saw the end of an era for MA, with the departure of Bernice Murphy as National Director. Bernice has been instrumental in the transformation of MA into a truly effective national membership body for the museum, gallery and cultural collections sector. She joined MA in that role in 2006 and has ably guided the National Council and State and Territory branches until the end of 2014. She has an unsurpassed knowledge of our sector, and is a world leader in museum ethics. I certainly appreciate the guidance she gave me in becoming National President, and we all wish Bernice the best with the next stage of a very illustrious career.

There have been many significant issues for our sector over the year. The most public of these was extensive media coverage of the disputed provenance of a number of significant Indian objects held in Australia, and their subsequent repatriation. A key outcome of this episode was the release by the Commonwealth of guidelines on collecting cultural objects. These were prepared with significant input from the Alliance of Australian Museums and Galleries, which includes MA. The success of the Alliance in influencing government is testament to the benefits of the sector peak bodies working together.

Another important event for our sector was the release of the GLAM study (Innovation Study: Challenges and Opportunities for Australia's Galleries, Libraries, Archives and Museums), prepared by the CSIRO and others, but with significant input from sector representatives, and the introduction to the study written

by me as MA President. This report illustrated the patchy nature of digital innovation across the GLAM sector, and lack of significant collaboration between the GLAM silos. MA is particularly concerned to ensure that the interests of the medium and smaller organisations in the sector have access to the benefits of the digital revolution, both for the organisations and for the wider community. MA has taken a leadership role, in close collaboration with the Australian Libraries and Information Association, in organising a meeting of GLAM sector peak bodies that will take place in June 2015. A key aim of that gathering will be to show that the GLAM silos can break down, and that together we have a good chance of shaping digital policy for the cultural collections sector at all three levels of government.

2014 also saw recognition by MA that for a range of largely historic reasons, it does not necessarily adequately cover the interests of all parts of the museums and galleries sector, especially the interests of the regional galleries. Both I and MA's National Council are committed to serious consultation with our regional gallery colleagues about how MA can represent the interests of the gallery sector better. The time is also opportune to look at MA's structure to see if there are changes that would make MA more effective. And as they say, there is a lot in a name, so we will look at MA's name and branding to see if any changes are necessary there too.

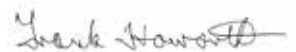
Fostering interaction and sharing of ideas between members are key roles of MA, and this was exemplified at the excellent MA 2014 Conference held in Launceston last May. Conference Committee chair, and MA

National Vice-President Richard Mulvaney, led a very dedicated team of conference organisers. The fact that the conference was a sellout testifies to its appeal and success.

MA is the collective effort of a lot of people who work together to strengthen our sector. First, I want to thank my colleagues on the National Council for their passion, dedication and willingness to put time into furthering your interests. They bring together the strengths and ideas of the State and Territory Branches who I also want to acknowledge and thank. And I want to thank you, the members of MA, for caring about our sector, your colleagues and how we benefit the wider community.

Our interests as members are strongly supported by our very able staff in Canberra, Melbourne and Perth. This is a good point to welcome Alex Marsden as our new National Director, who will be working closely with Laura Miles and her team in Melbourne and Robert Mitchell and his team in Perth, and will as ever be very capably supported by Lee Scott, Stephanie Hamilton and Sunette le Roux. I specifically want to acknowledge and thank Laura and Robert for their tireless work on behalf of MA.

2015 is shaping up to be a year of discussion, influence and change. Make sure you have your voice in that most interesting process!



National President  
Museums Australia



## ..... National Director's Introduction

I am very happy to have been given the opportunity to follow Bernice and lead the national office of Museums Australia (MANO) at a time of far-reaching changes and great opportunities for our members and the cultural sector. I have been overwhelmed by the welcome from colleagues and energised by the ideas, generosity and commitment shown by everyone I have met across Australia in my first two months.

2014 was a year of great activity, discussion and review which also generated competing ideas about the role, structure and reach of this organisation, the health of the cultural heritage sector, and possible priorities to pursue. Museums Australia will continue to tackle all the big questions, drawing on the collective expertise, imagination and investment of our members and partners.

Taking on the role of director, my aims are fourfold:

- To lead a smoothly functioning national organisation and national office that is receptive to and anticipates the needs of members, divisions and the national council
- To secure a sounder and more diversified resource base for the organisation
- To create, advocate for and support innovative policies, programs and services
- To significantly raise the level of understanding and appreciation of the fundamental importance of museums and cultural engagement to society as a whole.

To do this, MANO is open to new ideas and ways of doing things, and believes in strength through collaboration. With the national council currently reviewing and refocusing its corporate strategic plan, I look forward to outlining MA's progress in next year's annual report.

*Alex Marden*

National Director,  
Museums Australia



## National Council 2013–2015

### Executive

PRESIDENT

#### **Frank Howarth**

(Director, Australian Museum (to April 2014), Sydney)

VICE-PRESIDENT

#### **Richard Mulvaney**

(Director, Queen Victoria Museum & Art Gallery, Launceston)

TREASURER

#### **Suzanne Bravery**

(Senior Curator, North Sydney Council, Sydney)

SECRETARY

#### **Dr Mathew Trinca**

(Director, National Museum of Australia, Canberra)

### Ordinary Members

#### **Carol Cartwright**

(Australian War Memorial (retired), Canberra)

#### **Rebekah Butler**

(Executive Director, Museums & Galleries Queensland, Brisbane)

#### **Pierre Arpin**

(Director, Museum & Art Gallery of the Northern Territory, Darwin))

#### **Padraic Fisher**

(Director, National Wool Museum, Geelong)

#### **Dr Andrew Simpson**

(Director, Museum Studies Program, Macquarie University, Sydney)

#### **Peter Abbott**

(Flagstaff Hill Maritime Museum)

EX-OFFICIO MEMBER

#### **Dr Robin Hirst**

(Chair, ICOM Australia), Museum Victoria

PUBLIC OFFICER

#### **Dr Don McMichael CBE**

## About Museums Australia

### Background

Museums Australia (MA) was established in January 1994, arising from a planned decision to merge a number of separate museums associations long existing in Australia. A convergent desire emerged in the 1990s to strengthen the museums sector nationally (in its services delivery, policies, programs, training and interface with government): to pursue convergent objectives on a collaborative basis through one strong national body, with both organisational as well as individual membership supporting and providing direct expertise and input for the museums and galleries sector nationally.

MA draws individual and institutional resources as well as significant government and private sector support across some State/Territory jurisdictions (most strongly in Victoria and Western Australia), to support the development of museums and galleries across Australia and the communities they serve.

### Scope

Museums Australia members resource and provide expertise and input to ensure a dynamic national membership, development and services-delivery body. This works through a constellation of eight State and Territory Branches, 18 Chapters, 15 specialist National Networks, and is supported in national administration and coordination by the MA National Office (located within the National Museum of Australia).

### Vision

A strong organisation supporting and sustaining a vibrant museums, galleries and cultural heritage sector, so that Australia's cultural heritage is valued, enjoyed and protected.

### Purpose

In supporting MA members and services, to strengthen the museums, galleries and cultural heritage sector broadly through open communication, improvement of industry standards and ethics, influence with government, educators, industry and the community, and collaboration with industry partners.



## Our Values

- Ethical conduct
- Respect for Australia's and the world's first peoples
- Recognition of the intrinsic and instrumental value of cultural heritage
- Collaboration and inclusiveness
- Learning
- Equity of access to member services
- Promotion of cultural diversity and inter-generational equity.

## Our Environment

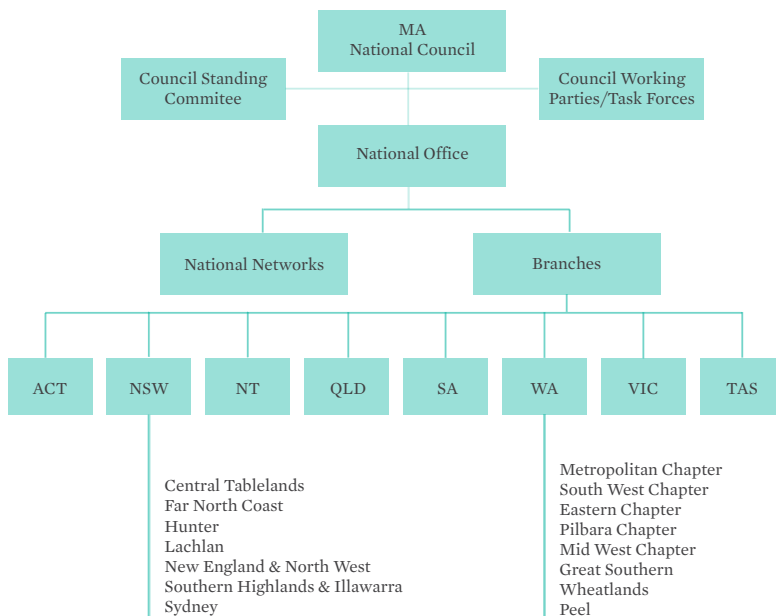
- Commonwealth, State and Local government policy for our sector varies greatly across Australia: from strong support to sometimes minimal provision.
- The digital revolution has changed and will continue to transform our sector rapidly.
- Government funding for our sector is declining, while non-government resources are potentially increasing.

- Increasing cultural and age diversity across Australia, with our sector generally relying on an often older workforce and an increasingly higher proportion of volunteers.
- Increasing expectations from Australia's Indigenous peoples for protection of, respect for, and engagement in presentation of their cultural heritage.
- Greater community and government focus on ethical cultural heritage acquisition and collection building.
- Increasing community focus on environmental sustainability and the impacts of climate change.

## National Association Funding

The work of the Association is primarily enabled through its members (large and small Organisational Members as well as Individual Members). Membership fees support the Association's activities across all States and Territories.

In 2014, MA National Office was granted funding provision through the 2013/14 round of Grants to



Voluntary Environment, Sustainability and Heritage Organisations (GVESHO) program, administered by the Department of the Environment. The GVESHO grant provided \$25,000 to assist coverage of administrative costs of the national association ending in June 2014. This was the last funding round available and the GVESHO program is now defunct.

Museums Australia (Victoria) and Museums Australia (WA) are meanwhile substantially funded through their state governments to provide services to the museums and galleries within their respective states.

## Governance Framework and Organisational Structure

The MA National Council, supported by the MA National Office (MANO), oversees the development of operations, policies, services, national strategy and advocacy, to advance the agreed aims of the organisation.

Governance of MA as an Association is conducted in accordance with the Museums Australia Constitution and By-Laws, including some modifications for Museums Australia Divisions that were adopted in 2004, with subsequent minor amendments by Council in 2008.

## National Council Standing Committees

Active National Council Standing Committees operating in 2014 covered Management, Finance and Audit, Membership, Conference, Communications and Website Review Committee, Professional Development and National Awards.

MA relies greatly on the dedicated support of councillors and colleagues who volunteer their valuable time and expertise, and MA thanks them all for their contribution.

### Management Committee

The Management Committee consists of the current Executive members of the National Council, and is supported by the National Director and National Operations Manager.

### Finance and Audit Committee

**Suzanne Bravery**, National Treasurer, Senior Curator North Sydney Council (Chair)

### Membership

**Carol Cartwright**, National Council Member (Chair)

## Conference

**Rechard Mulvaney**, Branch President, Museums Australia (Tasmania), Director Queen Victoria Museum and Art Gallery (Chair)

## Communications and Website Review

**Rebecca Coronel**, Branch President, Museums Australia (ACT), Manager Exhibitions and Gallery Development National Museum of Australia (Chair)

## Professional Development

**Padraic Fisher**, National Council Member, Director National Wool Museum (Chair)

## Awards

**Carol Cartwright**, National Council Member (Chair)

## Management and Accountability

Museums Australia

- Respects the work of all parts of the organisation and will avoid unnecessary duplication.
- Is committed to effective liaison and communication within the organisation.
- Promotes and upholds the highest professional practices and ethical values in its work with Australian museums and their communities.
- Is a fair and equitable employer.

## Audit

Museums Australia conducts an annual financial audit in line with the ACT Registrar-General's Office regulations. The annual audit is facilitated and consolidated by the National Office and the nominated Auditor Mr Anthony Wilson (Accountability).

## Ethical Standards

Staff and volunteers of the national association provide MA's most highly valued, collective repository of expertise, experience, collegial input and resources.

MA places a high priority on ensuring safe, healthy, supportive and productive workplaces. MA National Office is currently working on policies and procedures to advance workplace standards as part of an ongoing initiative to provide tools supporting development of all divisions of the association.

MA members are bound by Museums Australia's *Code of Ethics*, and Museums Australia - especially through its partnership with ICOM Australia - upholds the *ICOM Code of Ethics for Museums* (2004) as the international base-standards code promulgated by the International Council of Museums (Paris) (3rd, rev.edition), ICOM, Paris 2006.

## Staff

### **Museums Australia National Office (MANO)**

The National Office (located at the National Museum of Australia) maintains one full-time and two part-time employees:

#### **National Operations Manager**

Lee Scott

#### **Assistant Manager Communications, Awards Coordinator**

Stephanie Hamilton

#### **Administrative Assistant, Membership Officer**

Sunette le Roux

The National Director, Bernice Murphy, continued to provide externally contracted services in 2014 as a 0.8 FTE position based in the National Office, until her retirement at the close of the year.

### **New South Wales**

New South Wales branch contracted Gay Hendriksen as Executive Officer to support the state branch committee and provide services for NSW members and chapters.

### **Victoria**

MA (Vic) State Branch (working out of generous office facilities in the Melbourne Museum) supports a dynamic team of full-time, part-time and contracted positions, headed by Executive Director, Laura Miles. MA (Vic) is responsible for providing various programs and services across Victoria, including the important Museum Accreditation Program and Victorian Collections.

### **Western Australia**

MAWA currently supports 2 part-time staff: Executive Officer, Robert Mitchell and Professional Development Coordinator, Rosemary Fitzgerald.

### **Queensland**

Natasha Lewis Honeyman continued as Membership Officer for 0.1 FTE as part of her position within Museums and Galleries Queensland.

All other MA divisions and sub-divisions are fully operated by colleagues acting as *volunteers* - often serving on a wide array of committees - providing steerage for the association's services outreach, national and regional collaboration, events development, and development of all parts of the sector.

## Privacy and Records Management

MA members' personal and financial information is maintained in strictest confidentiality, in line with Museums Australia's Privacy Policy Statement. MA does not keep financial information about members on file.

Financial records, including membership transactions, are maintained (electronically and offsite) for at least five years, and human resources records for seven years. MA's membership database archives are maintained electronically, and date back to the incorporation of the association in January 1994 (in line with Section 67 of the Associations Incorporations Act 1991). The current membership database is stored online using the MA Content Management System designed and maintained by Link Digital, and updated by MA Australia National Office. The database is an online system that allows the National Office, Branch and Network representatives and members to access and update relevant information.

## ..... Branches

### Australian Capital Territory

President	<b>Rebecca Coronel</b>
Vice-President	<b>Penny Grist</b>
Secretary	<b>Kate Morschel</b>
Treasurer	<b>Kate Armstrong</b>
Committee members	
<b>Carol Cartwright</b>	<b>Vicki Northey</b>
<b>Tamsin Hong</b>	<b>Melissa Kemp</b>
<b>Roger Garland</b>	<b>Ashleigh Wadman</b>

The ACT Branch went through a strategic planning process in the second half of 2013 under the expert guidance of committee member Roger Garland. The confirmed Strategic Plan was adopted at the Annual General Meeting, and has since provided the roadmap for the committee in developing 2014 programming, and continues to influence work into 2015.

2014 was an election year for the ACT Branch, with new office holders elected in March 2014. The AGM was also an opportunity to recognise and thank a number of outgoing members who have shown outstanding commitment and support to the ACT Branch committee, including Alex Marsden, Gabrielle Hyslop and Glenda Smith.

The Branch delivered a calendar of professional development and recreational events including a breakfast at the Australian National Botanic Gardens, a presentation by Sir Norman Palmer on arts law, *Stop. Motion.Nolan* at the Canberra Museum and Gallery, *Director on the Couch* with Dr Daryl Karp, and hosting a Q&A session with ICOM President, Dr Hans Martin Hinz. The year ended with a casual function and exhibition viewing at the National Museum of Australia.

Two bursaries were awarded to allow ACT members to attend the National Conference in Launceston in May 2014. Bursary recipients gave excellent presentations and feedback to a branch event after the Conference, and shared their thoughts on the professional development and networking opportunities offered by the National Conference.

Finances for the MA ACT branch remain strong, with input from the ACT membership cadre and from events and programs run by the committee. There continued

to be a commitment by this committee to spend some of the accumulated funds on members and activities during 2014, which has been done with many events offered subsidised or free of charge.

The President is active on National Council, chairing the Communications and Website Review Committee, which commenced work on scoping a new membership database and website redevelopment. Carol Cartwright (immediate past President) continues her work on the National Committee through involvement in the Membership and Professional Development committees.

I extend a huge vote of thanks to the Branch Committee for its support and activity during 2014. We are a wholly volunteer group and we rely on the committee members for their enthusiasm and personal commitment to develop, organise and deliver the ACT programs.

### New South Wales

President	<b>Andrew Simpson</b>
Vice-President	<b>Geoff Barker</b>
Secretary	<b>Deborah Turnbull (to June 2014)</b>
Treasurer	<b>Jenny Horder</b>
Committee Members	
<b>Gina Hammond</b>	<b>Chiara O’Rielly</b>
<b>Rebecca Pinchin (until June 2014)</b>	
<b>Liz Gillroy (until November 2014)</b>	
Executive Officer	<b>Gay Hendriksen</b>

2014 was a challenging year for the NSW branch. The early departure of Branch President, Vicki Northey, through relocation to the Australian Capital Territory, and the absence of members willing to take on vital committee positions coincided with the branch taking responsibility for the organisation of the Museums Australia National Conference in 2015. A local conference organising committee was formed to work in conjunction with the National Council’s Conference Committee and the Professional Conference Organiser, Conference Logistics to produce #MA2015syd. I agreed to again chair the NSW branch committee after a number of requests.

In early discussions about the conference it was decided that conference organisation for 2015 would be the focus

of activity for the Branch Committee as conference organising requires a substantive commitment to many hours of volunteer work. Activities traditionally supported by the branch such as advocacy, chapter support, tours and programs of talks and workshops as outlined in the Branch Strategic Plan for 2012-2014 were put on hold.

With this exclusive focus on conference preparation a number of people stepped forward to participate for specific roles with the conference organising committee which became the de facto NSW Branch committee. While there have been some changes to the members of this committee the committee as a whole has worked together to deliver the 2015 MA National Conference in Sydney in May 2015.

In 2014 a number of meetings were held with the state agency, Museums and Galleries New South Wales (M&G NSW) with a view to establishing a Memorandum of Understanding, however no progress has yet been made with this. M&G NSW continued to support sector activities through disbursement of Arts NSW funding and their other established programs. Museums Australia NSW members previously had input into M&G NSW activities through membership of the Museums Reference Committee and the Volunteers Reference Committee. However, a restructure of M&G NSW resulted in these committees no longer being active.

Geoff Barker (MANSW Vice President) attended the “Keeping it Real” symposium in Albury along with representatives of M&G NSW. The state branch sponsored Rose Hiscock to attend and speak at this event. The symposium led to the establishment of a new Murray Network of Museums Australia that spans the NSW-Victoria border.

Representatives of the Museums Australia National Office and MA National President, Frank Howarth have attended meetings of regional museums in NSW over the last year. In previous reports it was noted that branch facilities were the home office of the former Executive Officer. In the absence of a stable committee the branch has no established office facility. The last year has also seen the branch lose access to storage space at the Powerhouse Museum for branch records that extend

back to well before the formation of Museums Australia. A process of culling this information, archiving and transfer to the State Library of NSW is underway and close to completion at time of writing. The Business Administration Officer has been deployed for this task when available, plus we have hired additional staff and volunteers to assist.

As a volunteer run state branch with limited resources and only an informal working relationship with the state agency M&G NSW, the past year has been particularly challenging. These challenges have been compounded by our inability to fill branch positions at various times, frequent changes of committee membership and the challenge of organising a national conference. We believe the state branch needs renewal and a better platform for interaction with, or integration with M&G NSW. To this end we are compiling a document outlining strategic perspectives to present to the membership and the incoming MANSW branch committee for consideration after the 2015 AGM.

## Mid North Coast Chapter

President **Debbie Sommers**

Vice-President **Terrie Beckhouse**

The Waterways Project is progressing well. As originally intended, the project is being managed by a Project Steering Group with representatives from the six participating museums who have met on 8 occasions since the project officially commenced in January. Most meetings have been linked to workshops with either or both of the project consultants Kylie Winkworth and Kevin Williams. Site visits to three museums were also conducted.

Regular project bulletins are issued by email, 11 to date, to keep all participants up to date with project expectations, progress, meeting dates, time frames, deadlines, and feedback.

Achievements to date include completion of 57 object assessments and statements of significance across 6 museums. This is considerably more than our original expectations of 5 objects per museum for the web exhibition however the exhibition will be greatly

enhanced by the additional material. This has added a little to the time frame, but has also given museum volunteers more opportunities to hone their significance assessment and research skills. Several volunteers have undertaken this work for the first time and have done an exceptional job and some museums have had limited capacity and have been assisted by those from other participating museums. The object research phase of the project has taken considerably longer than envisaged but we are very pleased with the outcomes and believe the overall project outcomes and quality will be greatly enhanced by this additional effort. Object photography for the web exhibition has also been completed.

The group has also applied for a MMAPSS grant to conduct condition reports on the objects identified and documented for this project. Other potential future projects have also been identified.



ABOVE FROM TOP: *Fishing Harpoons*, from Camden Haven Historical Society and *Minute Gun*, from Wingham Museum. Part of the Waterways Project.

We have now entered the heritage trail and web development phase of the project. Branding and logo design has been approved by the project group as has the size and scope of the printed collateral. Sites for the trail brochure have been identified and are being refined. Historic images have been sourced. Our Heritage Tourism consultant is currently working on the heritage trail routes and layout.

At this stage, we expect to acquit the entire project by the end of February 2015, within the reporting timeframes, however we have not yet determined a launch date for the heritage trail brochure or web exhibition.

## Northern Territory

Hon. Secretary **Janie Mason**

With the small Northern Territory membership and few members in the local Museum and Art Gallery NT [MAGNT], we continue to have difficulty recruiting to the local Museums Australia Council. I thank those stalwarts who have supported our limited activities and in maintaining our Council, with especial thanks to Jarad Archibald and Jenny and John Bloomfield.

There have been regular newsletters to members, usually after each National Council meeting. With no applicants for NT bursaries for assistance, the Council instead approved assistance of \$500 each to the Bloomfields to assist in their costs to attend 2014 National Conference and to Janie Mason to attend the Melbourne meeting of the National Council.

John Bloomfield died mid-year. He is missed greatly for the active contribution he has made to the heritage and cultural sector in Darwin over many years. Regular attendants at Museums Australia national conferences, he and his wife were well known as volunteers with MAGNT and Defence of Darwin Experience.

Territory heritage and cultural organisations continue to be poorly served with continued government under-resourcing of regional, remote and community collections. The Territory is the only jurisdiction without any sort of regional museum program or officers. A few grants are awarded to some museums on the regular tourist trail.

## Queensland

President **John Waldron**  
Secretary **Suesann Vos**  
Treasurer **Brian Tucker**  
Committee Members  
**Joolie Gibbs** **Karen Barrett**

2014 was a year of continued assessment and development for the MAQ Executive Committee. In late 2014, Edith Cuffe, Abbey Museum of Art and Archaeology stepped down from the role of President. Edith will be sorely missed on the MAQ Executive Committee and was thanked for her great effort in leading MAQ into a new increased phase of activity.

I was elected to the role of MAQ President, having served as Chair of Museums and Galleries Queensland and previously for the committee for Regional Galleries Association Queensland.

This past year, MAQ continued to increase engagement with members through the development of its e-newsletter. MAQ also supported and promoted the formation of an education network in Queensland organised by members volunteering their time. The Museums Australia Education Queensland network provides valuable knowledge-sharing opportunities for museum workers and MAQ encourages its members to become actively involved with and support the growth of this locally based network.

In 2014, MAQ provided funds of \$1,500 to support three bursaries. Justyne Wilson, Pine Rivers Heritage Museum, received a bursary to attend the Museums Australia National Conference in Tasmania. Two smaller bursaries were awarded to Nicola Holly, Stanthorpe Regional Art Gallery, and Michele Pickering, Miegunyah House Museum (QWHA), to attend the South East Queensland Small Museums Conference held in Redland Bay.

## South Australia

President **Mirna Heruc**  
Vice-President **Michael Mills**  
Secretary **Veronika Petroff**  
Treasurer **Tony Kanellos**  
Committee Members  
**Elizabeth Pascale** **Di Fisher**  
**Katherine Howard** **Moirra Simpson**  
**Alice Beale**

A new team took on the leadership of MA (SA) in 2014 and we re-focused our mission on the nurturing of emerging professionals and extending museum and collections networks to engage the sector in broader Museums Australia activities. To that end our branch hosts regular monthly networking breakfasts with guest speakers, organises specialised curator hosted visits to collections and museums and hosts discussion forums. As a special initiative in 2014 we established an Exhibition Club specifically designed to analyse exhibitions that members visit independently and in this way engage in dynamic discussion about design, interpretation and exhibition issues. We support professional development and have provided 4 members with bursaries to attend Museums Australia conference, International Museum Theatre Alliance Symposium and have supported State History Conference in its outreach to museum and collection practitioners. Our branch is managed by volunteers and in total statewide we have 58 individual members and 29 organisational members. In the past year membership has increased by 14%.



## Tasmania

President	<b>Richard Mulvaney</b>
Secretary	<b>Belinda Cotton</b>
Committee members	
<b>Melissa Smith</b>	<b>Linda Clarke</b>
<b>Helen Whitty</b>	<b>Jane Deeth</b>

We again had a busy year that was highlighted by the Branch hosting the Museums Australia National Conference in Launceston in May. Without doubt the conference was a major logistical exercise for a small branch with planning for the conference commencing eighteen months out from the event. We relied on many people across the sector to provide what we would consider a very successful program. We managed to coordinate over 120 parallel session speakers, including 10 plenary speakers with a unique offering of events and social programs.

The Branch provided funding for the official welcome at the Queen Victoria Museum and Art Gallery and also offered six bursaries. Financially it recorded the highest return of any previous conference and demonstrated that the national conference can be in a regional centre and be effective. The Branch extends its appreciation to the 2014 Conference Organising Committee.

We held our AGM in June with QVMAG Curator of History providing a talk on the pioneer Tasmanian photographer, collector and museum entrepreneur, John Watt Beatie. We supported a masterclass with Volunteering Tasmania on volunteering and museums in July. In December we also assisted with the Arts Association of Australia and New Zealand Conference that was held in Launceston.

The range of activities and events that occurred throughout Tasmania such as seminars, workshops and exhibition openings were posted on our Blog site and sent out to all members every two weeks.

## Victoria

President	<b>Jo-Anne Cooper</b>
Vice-President	<b>Lauren Ellis</b>
Secretary	<b>vacant</b>
Treasurer	<b>Ian Scott</b>
Committee Members	
<b>Peter Abbott</b>	<b>Marcus Schutenko</b>
<b>Jim McCann</b>	<b>Martin Purslow</b>
<b>Samantha Fabry</b>	<b>Lauren Bourke</b>
Executive Director	<b>Laura Miles</b>

2014 marked the first year of our triennial core funding agreement with the Victorian Government within the new Organisations Investment Program (OIP), supported by additional funding from the Department of Veterans' Affairs and the R.E. Ross Trust. The Branch's biggest in-kind supporter, Museum Victoria, generously provided us with office space at Melbourne Museum as well as support for many MA (Vic) activities.

Our annual program of activities delivered 79 professional development and sector events ranging from exhibition viewings, workshops, seminars, our third State Conference in Warrnambool and a sold-out Victorian Museum Awards, kindly hosted at Melbourne Museum by Dr J Patrick Greene, and the Minister for the Arts, with ABC TV's Adam Ford as MC.

Over 100 organisations are enrolled in our Accreditation program, with five newly-Accredited: the Australian Racing Museum, Burrinja Cultural Centre, Echuca Historical Society, Coal Creek Community Park and Museum, and the Polly Woodside. The Victorian Collections project, in partnership with Museum Victoria, launched its redesign with the Ministers for the Arts and Veterans Affairs, with over 50,000 objects now digitised with some also discoverable on the National Library of Australia's TROVE system.

Our members' magazine, *INSITE*, continues to be an invaluable source of information and reflection for the sector, with five full-colour issues on faith museums, volunteering, audience appeal, rare trades, and privacy. The new Roving Curator Program offers professional hands-on advice to selected organisations for exhibition improvement and culminated in the special *Victoria Then*



community collections exhibition in the foyer at Arts Victoria.

Other successes this year include doubled media coverage of MA (Vic) and member activities, a refresh of our member e-bulletin, and the commissioning of arts and culture videos published on the *Culture Victoria* website.

## Western Australia

President	<b>Soula Veyradier</b>
Vice-President	<b>Jane King</b>
Treasurer	<b>Ben Arnold</b>
Committee members	
<b>Katrina Bott</b>	<b>Luke Donegan</b>
<b>Leigh O'Brien</b>	<b>Richard Offen</b>
<b>Zoe Scott</b>	<b>Moss Wilson</b>
Executive Officer	<b>Robert Mitchell</b>

During 2014, MAWA was supported by 3 part-time staff and 3 volunteers. Robert Mitchell, curator at the Army Museum of Western Australia, fills the Executive Officer position. Rosemary Fitzgerald oversaw the professional development activities of MAWA as the Programs Coordinator. Uta Bauer continued her support as the Finance Officer. Member, Leith Robinson carried



out extensive volunteer duties in the presentation and evaluation of the State Conference. Volunteer Ruth Perrin undertook revision of the Mid-West Museums and Galleries Brochure. Alex Carlton- Moyle coordinated the preparation of the 2013 Annual Report.

Major funding for operations was provided by a grant from the Department of Culture and the Arts, from program income and membership capitation. Substantial in kind support from the Western Australian Museum included office space and access to network infrastructure.

### **Programs and Activities**

Museums Australia Western Australia (MAWA) had an active and productive year in fulfilling its strategic goal of advancing museums, galleries and cultural centres both through membership and also across the cultural heritage sector.

The successful collation, publishing and distribution of the Museums and Galleries Mid-West Region brochure initiated the ongoing review and updating of the regional brochures program initiated by Museums Australia Western Australia 5 years ago. It is planned to update one brochure annually. All brochures will now be presented on line as pdf's and made freely available. Hard copy distribution will remain dependent on grants and external funding.

International Museums Day and Museums Week again formed part of the National Trust coordinated Western Australia Heritage Festival which ran from 18 April to 18 May. This partnering extended the reach of publicity and promotion for members' events, secured additional memberships and encouraged broader attendance at participating museums, galleries and cultural centres. Fifty-nine separate events were held by members in Metro as part of Heritage Festival or International Museums Day. Thirty-two separate events were held by members in Regions as part of Heritage Festival or International Museums Day.

MAWA remains committed to supporting our regional Chapters with 8 regional visits throughout the year offering professional development and sector feedback sessions. MAWA continues to actively participate within

the culture and the arts sector in Western Australia including the Cultural Executives Group, Country Arts WA, Community Arts Network, Art on the Move and the Collections Sector Advisory Committee. The Committee provides support and advice to the State's main arts and culture fund, the Department of Culture and the Arts. MAWA President chaired the Department of Culture and the Arts "Connect" grants panel, directed towards collections sector funding support through three grant programs: Emerging Curator; Artist in Residence; and Engaging Collections.

MAWA provided both financial and content support to the review of Small to Medium Cultural Organisations (S2M) initiative facilitated by the WA Chamber of Arts and Culture. The Review Report has provided substantial documentation which will be used to substantiate ongoing program funding requests in a changing environment. MAWA provided secretarial and administrative support to an independent review of "Connect" funding conducted by Margaret Birtley. This review together with related comments and feedback provided to the Department of Culture and the Arts on its *Organisation Investment Program* will further connect with issues identified in the S2M report as funding for arts and culture organisations is adjusted to meet new budget realities in a post mining boom environment.

MAWA continues to support the positive governance issues of Museums Australia through face to face and teleconference meetings. Executive officer, Robert Mitchell, is a member of the Museums Australia Finance Committee and MAWA Programs Coordinator, Rosemary Fitzgerald, is a member of the Museums Australia Professional Development Committee. MAWA has transferred a portion of its funds to centrally managed accounts to provide additional interest income in support of nationally coordinated projects.

MAWA bid farewell to Dr Brian Shepherd who has relocated to Launceston. Brian authored the Training Needs Review which was released at the end of 2012. Although discussions regarding training partnerships, accreditation and professional development funding are ongoing, no substantive progress was made in 2014 to implement recommendations contained in the Review.

The MAWA State Conference was held at the Queen Elizabeth Theatre in Geraldton from 16 – 18 October with strong local support from the Mid-West Chapter, the City of Greater Geraldton, the Western Australian Museum – Geraldton and volunteer members. There was a capacity attendance of 90. Inter-state and local speakers provided a combination of academic, professional development, workshop sessions and local museum and gallery tours. Thirty-eight regional members were able to attend through Lotterywest bursaries for registration and/or travel.

Between February and April 2014, the State Committee finalized the MAWA strategic and Business Plan for 2014 – 2017. This was followed by a number of face to face meetings with the Department of Culture and the Arts. Renewal of the next triennium of funding was in

BELOW: Western Australia State Conference delegates participating in the Naaguja Weeara regional tour of culturally significant sites in Greater Geraldton.

hand when in late November 2014, all arts and culture organisations receiving support from the Department of Culture and the Arts received notification of the revised funding process under *Organisation Investment Program*. Current funding was extended for a further 12 months and work has commenced to work through the new process in 2015.

Museums Australia WA continues to work with the Western Australian Museum, the National Trust (WA), the Army Museum of WA, Albany AIF Convoy committees, the State Library of WA and the Royal WA Historical Society to coordinate commemorations, exhibits and public programs during centenary of World War One anniversaries through to 2019. A major focus of this support is through the *Remembering Them* program a partnering of the Western Australian Museum, the Royal Western Australian Historical Society and Museums Australia. Four exhibits were launched in 2014 and a further 28 are programmed through to 2019.



## National Networks

### National Network Activities

Many MA National Networks were active throughout 2014. Networks provided members with targeted newsletters, such as *Historians' Timelines*; held conferences or workshops, including IMTALAP and Performing Arts Heritage; ran sessions at the National Conference; funded bursary programs to assist members to attend professional development events; and maintained blogs and other social media.

### International Museum Theatre Alliance, Asia Pacific

IMTAL Asia Pacific (International Museum Theatre Alliance, Asia Pacific) had a very successful year in 2014.

Members enjoyed four quality newsletters that explored various issues in museums and with performance in museums/cultural institutions.

The main event was the 2 day symposium in Adelaide titled: "Putting the Muse into Museums." The first day was filled with talks and workshops by notable cultural practitioners from South Australia and across Australia with reference to storytelling and the power this communication tool has in museums.

Participants viewed a very powerful performance with the Young Australia Ballet at the Immigration Museum, vignettes spread across the Adelaide Festival Centre and an intimate encounter with Dame Nellie Melba in the Board Room.



The second day took delegates to the Maritime Museum where we saw Michael Mills perform in a brilliant show called "Gory Stories from the Putrid Past" at the South Australian Maritime Museum. This show was developed to complement (and not add on to) an exhibition at the museum called Rough Medicine.

The program ended in tragedy when participants were forced to view the Port Adelaide Football Club Collection – but did note the absolute museum significance of the collection.

It is important to note that Michael Mills (of Heaps Good Productions) curated this excellent program and we thank him very much. Michael is also the secretary of the Port Adelaide Football Club Fan Club!

### Museums Australia Education

Last year MAE reported on a number of strategies which it planned to take forward over 2014 including:

- Expanding its online presence through our website (<http://museumsaustraliaeducation.wordpress.com>) and social media
- Using Google Hangouts for online professional development – both as a way of overcoming geographical distance, and in order to actively learn and model how to work with the technology
- Running a pre-conference day alongside the Launceston national conference – MAE Day
- Encouraging and supporting states and territories to run their own museum education events and move towards formally constituting themselves.

And while all of this work is limited to what can be managed by a volunteer committee working in its 'spare time', the committee is happy to report that there has been a great deal of progress.

LEFT: Michael Mills as Orphanage Director with Australian Youth Ballet dancers in the background – performing at Adelaide Immigration Museum.

At the time of writing, the MAE website has 229 followers and has posted a range of content over the year including video from professional development sessions run by MAE and the New South Wales group, MAED New, promotion for MAE's pre-conference days and other materials. MAE's Twitter account has 154 followers, its Google+ account has 51 followers and it has an active Facebook page (<https://www.facebook.com/MuseumsAustraliaEducation>). While some of these numbers are relatively modest, they represent people who have chosen to follow MAE's activities, as a direct outcome of the committee's strategy to enable more people to access information about MAE in response to previous survey feedback.

MAE ran two Google Hangouts over the year, both of which were recorded and are available on the MAE website:

- *How Relevant is Constructivist Theory to museum practice in Australia today?*  
Streamed live on Thursday 27 March  
Conversation with Dr Louise Zarmati, on her

research in nine history museums in Australia and the disconnect between theory and practice. Chaired by Peter Hoban (Sovereign Hill).

- *Technology in Australian Museums*  
Streamed live on Wednesday 8 October  
Angela Casey (National Museum of Australia), Andrew Hiskens (State Library Victoria) and Cameron Hocking (Melbourne Museum) shared digital technologies they have been using with students in their museum settings. Chaired by Peter Hoban (Sovereign Hill).

Around 40 people attended the MAE Day event in Launceston prior to the Museums Australia National Conference. Sessions included:

- How did I get here? The facts of life for museum educators – a panel discussion hosted by Christine Healey, Education Manager, Heide Museum of Modern Art with Karen Vickery (National Portrait Gallery), Andy Baird (Tasmanian Museum and Art Gallery), Naomi McCarthy (Penrith Regional Gallery & The Lewers Bequest) and Justyne Wilson (Pine Rivers Heritage Museum)
- Presentations by: Gillian Ridsdale (UQ Art Museum) Angela Casey (National Museum of Australia) and Andrew Hiskens (MAE, State Library of Victoria)
- Peep Show, hosted by Priscilla Gaff (Melbourne Museum)
- Behind the scenes tour presented by Tamas Oszvald (Queen Victoria Museum and Art Gallery)

A number of states and territories have been active over the year – particularly the ACT, New South Wales, Queensland and Victoria. Of those, two are both well established and constituted as part of MA (ACT and Victoria). But 2014 saw an enormous growth of activity in NSW and Queensland, thanks to Jo Henwood and Janis Hanley respectively.



LEFT TOP: Screenshot from Kelly Carabott's presentation at the MAEd New workshop at the Powerhouse.

LEFT BOTTOM: Screenshot from Google Hangout with Dr Louise Zarmati.



Thanks are due to the MAE Executive – Peter Hoban (Treasurer), Christine Healey (Secretary and web/social media), Angela Casey (Vice President), Andrew Hiskens (President) – and the rest of the committee.

## Council of Australian University Museums and Collections (CAUMAC)

During the last year CAUMAC has been relatively inactive. There was no AGM in 2014. At the 2013 AGM it was resolved that the network would pursue research questions regarding the status and operating environment of Australia's university museums and collections. During the reporting period CAUMAC did not utilise its own financial resources to conduct research. Instead, individual funding secured from other sources was used.

Andrew Simpson attended a conference on Positioning Academic Heritage at the University of Ghent in November 2013 and presented a paper on developing an inclusive heritage narrative at new universities.

[http://www.researchgate.net/publication/266387673\\_Strategies\\_for\\_developing\\_an\\_inclusive\\_narrative\\_of\\_institutional\\_identity\\_for\\_young\\_universities\\_some\\_Australian\\_examples](http://www.researchgate.net/publication/266387673_Strategies_for_developing_an_inclusive_narrative_of_institutional_identity_for_young_universities_some_Australian_examples)

The experiences from this conference were subsequently published as an article in *Museums Australia Magazine* entitled "Rethinking the University Museum".

[http://www.researchgate.net/publication/262725987\\_Rethinking\\_university\\_museums\\_Material\\_collections\\_and\\_the\\_changing\\_world\\_of\\_higher\\_education](http://www.researchgate.net/publication/262725987_Rethinking_university_museums_Material_collections_and_the_changing_world_of_higher_education)

Other coverage of university museums during the period included Craig Middleton's 2015 article "One man's trash is another man's treasure: Australian political ephemera" MAM 23(1) 29-30. It features collections from the Australian History Museum at Macquarie University

CAUMAC ceased doing regular newsletters and undertakes communication with members through the wordpress site <https://caumac.wordpress.com/>

This site now carries a number of past newsletters, old newsletters from before CAUMAC was incorporated

as a Special Interest Group of Museums Australia are being sought for scanning and addition to the site. The site has also been used to carry promotional pieces for university museums and collections in Australia, compile a reference list of research papers on university museums and collections, link to newsletters of other university museum organisations (e.g. UMAC & AAAMG). Longer review pieces are also published on the site. At present no one outside of the network committee has offered material for the site, however the presence and usefulness of the site has been confirmed in some email correspondence between the committee and membership.

The Macquarie University exhibition "Affinities: 7 Museums 50 Objects" won a 2014 MAGNA Award.

Another 2014 Macquarie University exhibition "Creative Revisions" explored the question of cultural heritage in higher education. The CAUMAC wordpress site was used to seek other examples of higher education heritage research in Australia. Two examples were reported, an investigation into resources and early documentation associated with the Nursing Museum at Charles Darwin University and research into the early history of the art collection at UTS (University Technology, Sydney).

# ..... Membership

## Total Membership

<b>Total members</b>	<b>1410</b>
Organisational	687
Individual	723
New members	237
Lapsed members	272
Growth rate	-3%
Retention rate	80%

## New Members

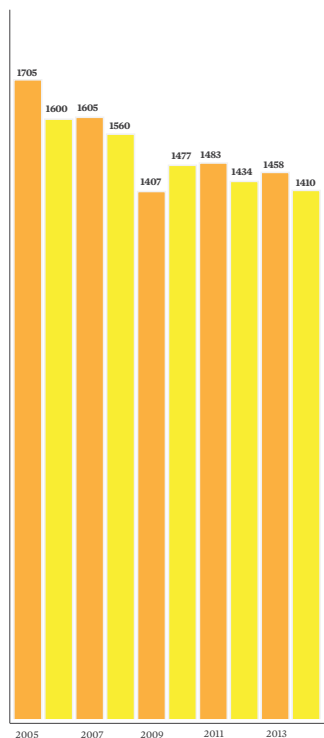
Museums Australia warmly welcomes all of our new members who joined us in 2014. New memberships remained evenly spread throughout the year.

## Membership Review Committee

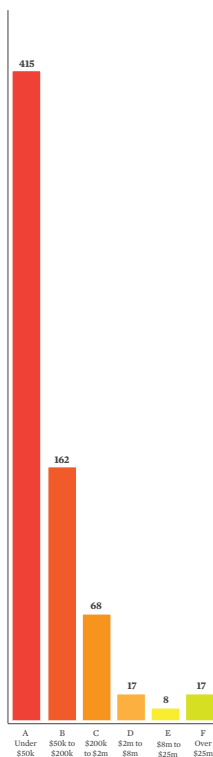
The Membership Review Committee, formed in 2012 with the goal of redeveloping MA's membership and fee structure and determining ways of increasing and communicating member benefits, finalised their review in 2014. The new membership structure was implemented in February 2014. There was little to no negative feedback to the changes from members and the membership retention rate remains at approximately 80%, consistent with previous years.

## Snapshot of Membership

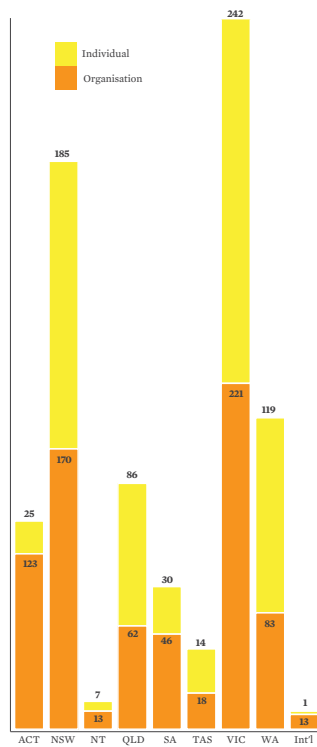
The below charts visualise various demographics within Museums Australia's national membership based on data supplied by members.



Trends in total membership by year 2005 - 2014



Organisational membership by category



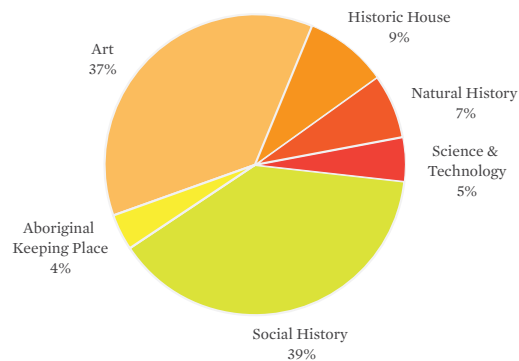
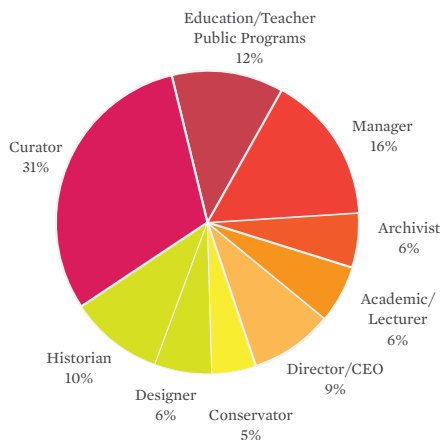
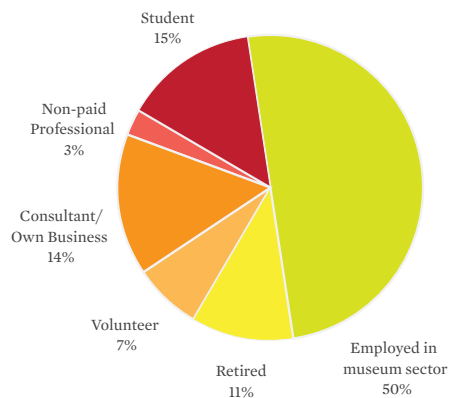
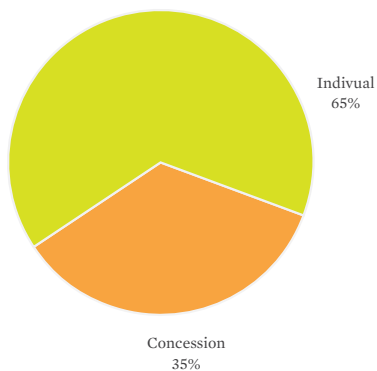
Total end of year membership by State/Territory

PREVIOUS PAGE FROM FAR LEFT:

- Trends in total membership by year 2005-2014
- Organisational membership by category
- Total end of year membership by state/territory

THIS PAGE CLOCKWISE FROM TOP LEFT:

- Individual members by membership type (Full or Concession)
- Individual members by job type
- Individual members by position title
- Organisational members by museum type





## National Conference

*Connecting the Edge: Within and beyond the Museum*  
(16–19 May 2014, Launceston)

### Welcome to Country

Saturday morning in Launceston, 17 May, saw the first complete plenary gathering at the QVMAG Tramsheds Auditorium, Inveresk campus. It was the first time the Museums Australia Conference was returning to Tasmania in 21 years. The last occasion was December 1993, on the eve of Museums Australia's creation as a national association.

Appropriately the morning began with a Welcome to Country by Patsy Cameron, Aboriginal Elder, author, historian, and self-described 'cultural artisan'. Her Welcome, on behalf of the Elders and descendants of the Palawa tribe from the Tamar area, known as the Leterremairrener, Pannihir and Tyerrernole people, was eloquent and deeply moving. Patsy Cameron shaped an understanding of local Aboriginal history, setting out the background of the first peoples interconnected in the area that later became known as the Tamar Valley. All participants in the Conference were brought to the right place and understanding of the lands on which they met, and the important relationships set in place through Patsy Cameron's Welcome to Country, enabled a successful meeting to occur over subsequent days.

### Conference Launch

His Excellency, The Honourable Peter Underwood AC, Governor of Tasmania, performed the Conference Launch. The state's Governor was also impressive in his thoughtfulness about museums and their important services and roles for public benefit. His address highlighted museums' collections and programs, and their contribution to the ways our culture and history are understood and enjoyed by the wider community.

### Regional+Remote+Community Museums Training Program (Friday, 16 May)

Prior to many delegates' arrival in Launceston, there were various events and meetings that have become important features of the sector's interaction opportunities around the National Conference each year. A key feature of the last decade has become a day's event bringing together many new colleagues at regional and

community-based levels around the country, for a series of training workshops.

### Other gatherings in Launceston

There were pre-Conference meetings of MA's National Council, the Council of Australasian Museum Directors (CAMD), together with representatives of ICOM-Australia and the Council of Australian Art Museum Directors (CAAMD). These now more regular gatherings have forged new collaborative energies around common-purpose issues. The joint-bodies meetings have advanced common agendas, including 'united voice' interface with Government around key topics — following strong outcomes of the Museum Summit prior to the 2013 Canberra Conference. Although these meetings were less visible than events in the main Program, and didn't snatch a hashtag or make it to the Conference Twitterfeed, this steadily growing collaboration is strengthening the sector, which builds wider benefits for all members and colleagues in partner organisations.

### The Conference as a nerve-centre for three days

Sessions in and around the main Conference — including the Conference Dinner & ICOM Awards; and MA's MAPDA and MAGNA programs that now make up a strong Awards Night social event — already have some coverage in this issue of MA Magazine. The Conference has further highlighted good people and topics targeted for MAM issues to follow. MA's Conference Mentorship program is also making sure that the skills and knowledge of younger colleagues can be captured early, and take some of our debates to new places.

It seemed more like a week's output of energies when all proceedings finally wound up on Monday afternoon in Launceston. To all organisers and hosts in Launceston, and to QVMAG Director, Richard Mulvaney and staff: a huge thank-you from MA and colleagues! MA delegates and friends were exuberantly farewelled by Richard Mulvaney and 'handed forward' to the <MA2015> Conference organisers and colleagues who will gather in Eora country, on Gadigal lands, in May 2015 in Sydney.



CLOCKWISE FROM TOP  
LEFT: Bruce Brown  
(Mental Media) on right  
demonstrating products  
at the trade exhibition,  
Tramsheds, Launceston;  
Richard Mulvaney at the  
microphone again at the  
Regional, Remote and  
Community Museum  
Welcome Reception at  
Design Centre Tasmania  
on Thursday 15 May;  
Michael Parry (Powerhouse  
Museum) presenting  
Getting Digital Done:  
effectively connecting  
museums and communities  
on Sunday 18 May; Regional,  
Remote and Community  
Museum Welcome  
Reception at Design Centre  
Tasmania on Thursday  
15 May; Daniel Thomas  
AM, special guest speaker  
at the Conference Gala  
Dinner, Sunday 18 May.

## ..... Awards

### Museums and Galleries National Awards (MAGNA)

The Museums and Galleries National Awards (MAGNAs), now in their fourth year, underwent one radical change in the National Awards Review: they became free to enter for MA members. The result? Triple the number of entries ever received for the MAGNAs! The aim was to make the awards as representative of Australia's museums and galleries as possible — a goal colleagues think we achieved based on the record number of entries that flooded into the National Office in March and April.

Not only was the number of entries outstanding, but the calibre and diversity of the submissions as well. From the smallest historical society in remotest Western Australia, to the largest institutions in the National Capital: covering exhibitions, Indigenous projects, and community and audience engagement programs of all sizes and sorts, the MAGNAs showcase the innovation and dynamism of our sector.

Winners were announced at the Museums Australia National Conference Awards Night on Saturday 17 May in Launceston. The full list of winning and commended entries, as well as photos from the event, are available on the MA website <[www.museumsaustralia.org.au](http://www.museumsaustralia.org.au)>.

From a shortlist comprising the winning entries from all categories of the MAGNA awards, the National Winner was determined based on outstanding innovation, effective community engagement, highest production values, sustainable practices and enterprising use of resources.

Joining past National Winners including the Australian Institute for the Conservation of Cultural Materials, Gwoonwardu Mia and the Tasmanian Museum and Art Gallery, Museum Victoria's *First Peoples* permanent exhibition redevelopment project was awarded the overall prize.

### Museums Australia Multimedia and Publication Design Awards (MAPDA)

The Museums Australia Multimedia & Publication Design Awards (MAPDA) are the only awards of their kind in the world. Originally based on the American Alliance of Museums (AAM) publication awards in the early 1990s, the MAPDAs have since evolved into a trans-Tasman program that seeks to recognise design excellence and innovation in publications and multimedia produced by museums and galleries.

The MAPDAs underwent a review of the categories and judging criteria before the launch in 2014. The changes were well-received, and a record number of entries were submitted by Australian and New Zealand collecting organisations.

Award winners were celebrated at the Museums Australia National Conference Awards Night on Saturday 17 May in Launceston.

The 2014 Special Judges' Award for print publications was the National Portrait Gallery of Australia, *Paris to Monaro: Pleasures from the studio of Hilda Rix Nicholas* (designed by Brett Wiencke). The Special Judges' Award



LEFT: MAGNA Award recipients at the ceremony in Launceston, March 2014. RIGHT TOP: Mat Trinca (Director, National Museum of Australia, left) receiving the Judges' Special Award for *Convict Love Tokens* from Sponsor Mike Petty (Splitting Image, right). RIGHT BELOW: Left to right: The Hon Heidi Victoria MP, Victorian Minister for the Arts, with Alison Raaymakers and Lorinda Cramer of the Australian Racing Museum.

for multimedia design was awarded to the National Museum of Australia for *Convict Love Tokens* <love-tokens.nma.gov.au>.

The full list of MAPDA award recipients and a gallery of entries is available online at <www.mapda.org.au>.

## 2014 Victorian Museum Awards

The Victorian Museum Awards celebrate the wonderful achievements of the Victorian museum and gallery sector. The 2014 Victorian Museum Awards were held on Thursday 7 August at Melbourne Museum.

In 2014 three Victorian Collections Awards for Excellence in Museum Cataloguing were given out. These Awards acknowledge the hard work undertaken by organisations that are cataloguing their military memorabilia collections online using Victorian Collections and are judged on the number of artefacts catalogued, the quality of the records and photographs, and the depth of historical research involved.

Museums Australia (Victoria) Individual Award for Excellence (Volunteer): **Ms Lurline Knee**

Museums Australia (Victoria) Individual Award for Excellence (Paid Staff): **Mr Patrick Watt**

Archival Survival Award for Volunteer-Run Museums: **Creswick Museum for the exhibition 'Spirit of China in Creswick'**

Museums Australia (Victoria) Award for Small Museums: **The Johnston Collection for the exhibition 'David McAllister Rearranges Mr Johnston's Collection'**

Museums Australia (Victoria) Award for Medium Museums: **National Wool Museum for 'Reminiscence Cottage'**

Museums Australia (Victoria) Award for Large Museums: **State Library of Victoria for the exhibition 'Rome: Piranesi's Vision'**

Victorian Collections Award for Excellence in Museum Cataloguing (Volunteer-Run Organisations): **Orbost and District Historical Society**

Victorian Collections Award for Excellence in Museum Cataloguing (Organisations with Paid Staff): **Victoria Police Museum**

Victorian Collections Award for Excellence in Museum Cataloguing (Military Memorabilia Collection): **Geelong RSL Sub-Branch**

Museums Australia acknowledges and congratulates all the 2014 award winners.



## ..... Communications

### Museums Australia Magazine

Two issues of *Museums Australia Magazine* were published in 2014. The magazine covers issues in the Australian and international museum and gallery communities.

### Review of Museums Australia Magazine

In 2014, the Finance and Audit Committee, and the Publications and Communications Committee, agreed to undertake a review of *Museums Australia Magazine* in terms of content and delivery. The review is ongoing in 2015 as part of a more strategic look at all forms of communication by MA and the use and impact of different communication tools. Members will be consulted throughout the review process in 2015.

The digitisation and indexing of past *Museums Australia Magazine*, and previously *Museum National*, dating back to 1992, continues, with more issues uploaded to the Museums Australia website for free access to members.

### Museums Australia Website

Museums Australia's national website is the association's major online presence. MA began Google Analytics on the national website in July. In the second half of 2014, the national website received 232,205 page views, with around 50% being returning users. The most visited pages were the Jobs Listing (35%) and information on conferences and publications.

### Upgrade of Museums Australia's National Website

The national Museums Australia website has not had a structural upgrade since its launch in 2005. The accompanying membership database has had several updates since, however the management system and script are extremely outdated in the modern, mobile world and the decision was made by the Publications and Communications Committee to begin the process of migrating to a new system.

Museums Australia undertook a member survey, to which 125 members replied, of needs and expectations of the website and database, its current trustworthiness, ease of use and potential improvements.

The National Office, and a selection committee of key stakeholders within the association, began the process of seeking a membership database software provider, shortlisting three suppliers in December 2014. It is anticipated a new database and accompanying website will be launched before the end of 2015.

### Division Communications

Branches and National Networks communicate regularly with their members through printed magazines, e-blasts and newsletters. Museums Australia (Vic) publishes INSITE quarterly for Victorian members.

### Jobs Bulletins

The Jobs Bulletin is one of Museums Australia's most valued member benefits. 165 positions were advertised in 2014 from Australian and New Zealand cultural organisations. This is a significant drop from 251 positions advertised in 2013 and a result of the federal public service hiring freeze. Despite the decrease in the amount of jobs advertising the Museums Australia Jobs Listings on the website, and the emailed bulletins, remains the 'go to' place for sector employment vacancies.

### e-Bulletins

The National Office launched a complementary bulletin service in 2014, separating the previous News and Events bulletin into a fortnightly News Bulletin, highlighting national and international news items and issues affecting the museums and galleries sector; and a monthly Events and Professional Development Opportunities bulletin outlining relevant upcoming events, workshops, grant opportunities and other useful information for members.

### Social Media

Museums Australia's national Facebook page closed 2014 with around 1,300 followers. Several state branches and networks administer their own social media presences, including Museums Australia (Vic)'s highly popular YouTube channel.



.....

## Partnerships

With the aim of strengthening our sector's united, national voice, Museums Australia has been proactively seeking partnerships with peak bodies in our sector and related sectors, such as libraries and archives.

### Museums and Galleries Australia Alliance

The Museums and Galleries Australia Alliance was cemented in 2014. The Alliance, made up of the Council of Australian Art Museum Directors, the Council of Australasian Museum Directors, Museums Australia and ICOM Australia work closely, particularly on submissions to the Federal Government and views around particular issues.

### ICOM Australia

ICOM Australia (the Australian National Committee of ICOM (the International Council of Museums)) has continued to work closely with Museums Australia.

MA receives secretariat funding from ICOM Australia, to assist the close partnership whereby MA administers ICOM membership and renewals.

ICOM Australia is working with MA with the upgrade of the national website and database, as the two back-end database systems are linked, enabling reciprocal membership benefits.

### Gordon Darling Foundation

The Gordon Darling Foundation announced in 2014 that the Museum Leadership Program would run in 2015. The Foundation partners with Museums Australia on the organisation, administration and implementation of the highly competitive Program.

The Gordon Darling Foundation continued its generous support of the Museums Australia National Conference, this year providing funds towards an art and design stream at the Launceston conference.

### Australian Library and Information Association

ALIA and Museums Australia have been working on several joint projects in 2014, including course accreditation models, digital initiatives and general information sharing between the associations.

### Museums Aotearoa

The relationship between Museums Aotearoa, the New Zealand association for museums and museum professionals, and Museums Australia has significantly strengthened in recent years. Beginning with discussions at the members' general forum at the National Conference in Launceston (May, 2014), the Australian and New Zealand associations have agreed to deliver a joint conference, to be hosted in Auckland in 2016. Museums Australia and Museums Aotearoa look forward to working collaboratively in the coming years in the lead up to the Museums Australasia Conference in 2016 and beyond.

### Sponsors, supporters and donors

Museums Australia operates with the generous support of the Australian Government, National Museum of Australia, Museum Victoria, Western Australian Museum, ICOM Australia, and Link Digital, as well as individual members who have made generous donations.

We gratefully acknowledge our sponsors, advertisers and supporters of all our national programs including national and state conferences, awards, workshops and events. We especially thank the organisations that allow their staff members to offer their time and expertise to Museums Australia programs for the benefit of all members and the sector.

## Income Statement for the Year Ended 31 December 2014

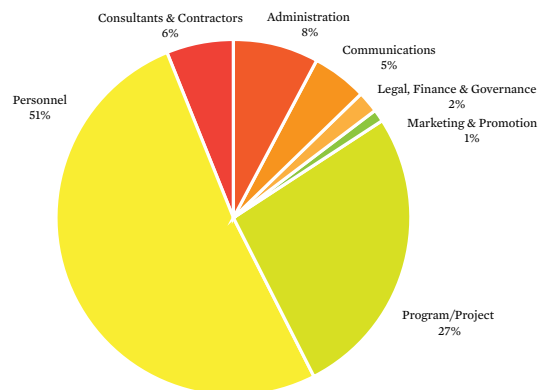
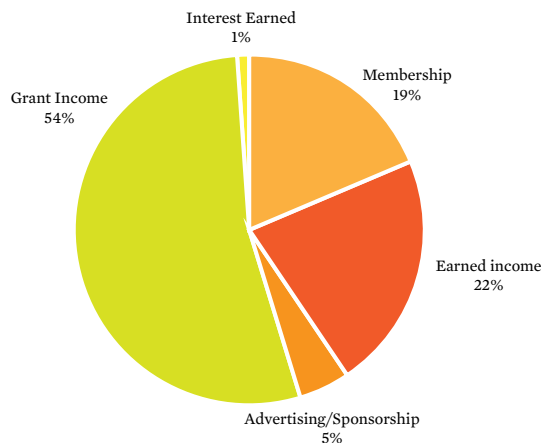
Income	2014	2013
Membership	\$ 260,179	\$ 255,898
Donations	\$ 1,339	\$ 1,500
Publication Sales	\$ 18,556	\$ 1,783
Advertising/Sponsorship	\$ 64,957	\$ 80,991
Event Income	\$ 156,987	\$ 141,642
Grant income	\$ 740,390	\$ 676,469
Bank Interest	\$ 12,139	\$ 12,223
Sundry Income	\$ 126,409	\$ 46,806
<b>Gross Income</b>	<b>\$ 1,380,957</b>	<b>\$ 1,231,760</b>
<b>Expenses</b>		
Administration	\$ 812,919	\$ 823,020
Travel & Accomodation	\$ 6,151	\$ 3,007
Magazine/Newsletter	\$ 42,309	\$ 57,688
Publication Production	\$ 13,440	\$ 13,731
Event Expenses	\$ 268,439	\$ 205,059
Award Expenses	\$ 20,830	\$ 1,909
Bursaries	\$ 1,500	\$ 26,983
Contracted Services	\$ 60,606	\$ 55,700
Sundry Expenses	\$ 84,831	\$ 4,020
<b>Total Expenses</b>	<b>\$ 1,311,023</b>	<b>\$ 1,191,118</b>
<b>Surplus/Deficit</b>	<b>\$ 69,934</b>	<b>\$ 40,642</b>

## Balance Sheet as at 31 December 2014

Current Assets	2014	2013
Cash on Hand	\$ 525,759	\$ 439,376
Receivables	\$ 309,056	\$ 24,471
Accruals and prepayments	\$ 50,922	\$ 25,349
<b>Total Current Assets</b>	<b>\$ 885,737</b>	<b>\$ 489,196</b>
<b>Non-Current Assets</b>		
Long term investments	-	-
Property, plant & equipment	\$ 80,955	\$ 73,121
Other non-current assets	-	-
<b>Total Non-Current Assets</b>	<b>\$ 80,955</b>	<b>\$ 73,121</b>
<b>Total Assets</b>	<b>\$ 966,691</b>	<b>\$ 562,317</b>
<b>Current Liabilities</b>		
Payables	\$ 92,193	-
Amounts payable to the ATO	\$ 7,546	\$ 69,717
Income in advance	\$ 375,289	\$ 75,638
Provisions	\$ 40,375	\$ 38,793
<b>Total Current Liabilities</b>	<b>\$ 515,404</b>	<b>\$ 184,148</b>
<b>Non-Current Liabilities</b>		
Provisions	\$ 9,283	\$ 6,099
<b>Total Non-Current Liabilities</b>	<b>\$ 9,283</b>	<b>\$ 6,099</b>
<b>Total Liabilities</b>	<b>\$ 524,687</b>	<b>\$ 190,247</b>
<b>Net Assets</b>	<b>\$ 442,005</b>	<b>\$ 372,070</b>
<b>Equity</b>		
Retained Earnings	\$ 372,070	\$ 331,428
Current Earnings	\$ 69,934	\$ 40,642
<b>Net Equity</b>	<b>\$ 442,005</b>	<b>\$ 372,070</b>

## Cash Flow Statement at 31 December 2014

	2014	2013
<b>Cash flows from operating activities</b>		
Grants	\$ 730,986	\$ 680,006
Interest	\$ 12,139	\$ 12,223
Other Income	\$ 652,899	\$ 552,849
Suppliers and others	\$ (1,290,499)	\$ (1,209,785)
Other expenses	-	-
<b>Net cash generated (used)</b>	<b>\$ 105,525</b>	<b>\$ 35,293</b>
<b>Cash flows from investing activities</b>		
Purchase of property, plant and equipment	\$ (19,143)	\$ (6,639)
<b>Net cash generated (used)</b>	<b>\$ (19,143)</b>	<b>\$ (6,639)</b>
Net movement in cash & cash equivalents	\$ 86,383	\$ 28,654
Cash & cash equivalents at beginning of year	\$ 439,376	\$ 410,722
<b>Cash &amp; cash equivalents at end of year</b>	<b>\$ 525,759</b>	<b>\$ 439,376</b>



### KEY STATISTICS:

- Sources of Income (LEFT)
- Expenses (RIGHT)



## ..... **Organisational Members**

### Australian Capital Territory

ACT Historic Places  
ANU Classics Museum  
Atlas of Living Australia  
Australasian Registrars Committee  
Australian Council of National Trusts  
Australian Federal Police Museum  
Australian National Museum of Education  
Australian National Wildlife Collection  
Australian War Memorial  
Canberra Glassworks  
Canberra Museum & Gallery  
Conference Logistics  
Designcraft  
Discovery - CSIRO  
Exhibitions Branch - National Library of Australia  
Hall School Museum  
Museum of Australian Democracy Old Parliament House  
National Archives of Australia  
National Capital Educational Tourism Project  
National Dinosaur Museum  
National Film & Sound Archive of Australia  
National Gallery of Australia  
National Library of Australia  
National Museum of Australia  
National Portrait Gallery of Australia  
Rob Little Digital Images  
Royal Australian Mint - Gallery & Education Section

### New South Wales

A M Rosenblum Jewish Museum  
Abbotsleigh Archives  
Age of Fishes Museum  
Albert Kersten Mining & Minerals Museum  
Albury City Cultural Services  
ARM Managment Inc - Rail Journey Museum  
Armidale & Region Aboriginal Cultural Centre & Keeping Place  
Art Exhibitions Australia Ltd  
Art Gallery of NSW  
Art Gallery of NSW Library

Australian Army Infantry Museum  
Australian Aviation Museum  
Australian Country Music Foundation Inc  
Australian Golf Heritage Society Inc  
Australian History Museum  
Australian Museum  
Australian Museum of Clothing and Textiles  
Australian National Maritime Museum  
Australian Society of Marine Artists  
Australian Tennis Museum  
Barker College  
Bathurst & District Historical Society Inc  
Bathurst Regional Art Gallery - Bathurst Regional Council  
Bega Valley Historical Society Inc  
Berrima District Historical & Family History Society Inc  
Berry Museum  
Bingara District Historical Society  
Bishops Lodge Historic House  
Bland District Historical Society  
Blue Mountains Cultural Centre  
Bowraville Folk Museum Inc.  
Bradman Museum  
Brisbane Water Historical Society  
Brunswick Valley Historical Society Inc  
Bundanon Trust  
BVN Architecture  
C. B. Alexander Foundation  
Camden Historical Society Inc  
Campbelltown Arts Centre  
Canowindra Historical Society & Museum  
Casino and District Historical Society Inc  
Cessnock District Historical & Family History Society Inc  
Charles Sturt University Art Collection  
Coalfields Heritage Group  
Coffs Harbour Regional Museum  
Cootamundra Heritage Centre  
Corowa District Historical Society  
Cowra and District Historical Society & Museum Inc.  
Cranbrook School Archives  
Cultural Collections - University of Newcastle  
Cundletown & Lower Manning Historical Society  
Dungog Historical Society Inc  
Evans Head Living Museum & Community Technology Centre  
Evans Head Memorial Aerodrome Heritage Aviation Association

Fairfield City Museum and Gallery  
Forbes & District Historical Association Inc  
Fort Scratchley Historical Society Inc  
Gallipoli Memorial Club Museum  
George Hanna Memorial Museum - City of Botany Bay  
Glen Innes & District Historical Society  
Glenalvon Museum  
Glenbawn Museum - Hunter Valley Museum of Rural Life  
Goulburn Regional Art Gallery  
Grafton Regional Gallery  
Great Lakes Historical Society  
Greek Orthodox Community of NSW  
Grenfell Historical Society Inc  
Griffith Pioneer Park Museum  
Gulgong Historical Society Inc  
Gundagai Historical Museum Inc  
Gunnedah Rural Museum  
Harden Murrumburrah Historical Society IncMuseum  
Harry Daly Museum  
Hawkesbury Regional Gallery & Hawkesbury Regional Museum  
Hay War Memorial High School  
Hazelhurst Regional Gallery & Arts Centre  
Henry Lawson Society NSW Inc  
Holly Sydney  
Hurstville City Museum & Gallery  
Illawarra Historical Society Inc  
Ingleburn Military Precinct Association Inc  
Jindera Pioneer Museum  
Juneë & District Historical Society  
Kandos Bicentennial Industrial Museum Incorporated  
Kangaroo Valley Historical Society  
Kiama & District Historical Society  
Knox Grammar School Archives  
Lady Denman Heritage Complex  
Lake Macquarie & District Historical Society  
Lake Macquarie City Art Gallery  
Lambing Flat Folk Museum - Young Historical Society Inc  
Lightning Ridge Historical Society  
Lithgow Small Arms Factory Museum Inc.  
Liverpool City Library and Museum  
Maclean District Historical Society  
Macleay River Historical Society Inc  
Maitland City Council - Maitland Gaol  
Maitland Regional Art Gallery  
Maitland Regional Museum Inc.

Manning Valley Historical Society Inc  
Mary MacKillop Place Museum  
May Gibbs Nutcote  
Merimbula-Imlay Historical Society  
Mid North Coast Maritime Museum  
Millthorpe & District Historical Society  
Monarch Historical Museum  
Morpeth Museum  
Mosman Art Gallery & Community Centre  
Mosman Library  
Mt Wilson & Mt Irvine Historical Society Inc  
Mt. Victoria & District Historical Society  
Museum of Australian Currency Notes  
Museum of Fire Inc  
Museum of Freemasonry  
Museum of Human Disease  
Museum of the Riverina, Wagga Wagga  
Museum Studies - University of Sydney  
Museums & Galleries of NSW  
Narrabri & District Historical Society Inc  
Narrandera Parkside Cottage Museum Inc  
Nepean District Historical Society  
Newcastle Art Gallery  
Newcastle Maritime Museum Society  
Newcastle Museum  
Norfolk Island Museum  
North Coast Institute of TAFE - Creative Industries  
NSW Hall of Champions  
NSW Lancers Memorial Museum Inc  
NSW Schoolhouse Museum  
Object: Australian Design Centre  
Orange & District Historical Society  
Orange Regional Museum Advancement  
Our Lady's Nurses for the Poor  
Ozbadge  
Parkes & District Historical Society Inc  
Parks and Recreation Services - Goulburn Mulwaree Council  
Parramatta Visitor Information and Heritage Centre  
Port Kembla Heritage Park  
Port Macquarie Historical Society Inc  
Port of Yamba Historical Society  
Port Stephens Historical Society  
Powerhouse Museum  
Preservation Australia  
Prince Henry Hospital Nursing & Medical Museum

Professional Historians Association (NSW)  
Queanbeyan Library  
RAN Heritage Collection  
Richmond Main Mining Museum  
Richmond River Historical Society Inc  
Richmond Vale Railway Museum  
Royal North Shore Hospital Centenary Museum  
Salvation Army Heritage Preservation Centre  
SCEGGS Darlinghurst  
Scone & Upper Hunter Historical Society Inc  
Singleton Historical Society & Museum  
Sir William Dobell Memorial  
St. Catherine's School Museum  
Stanton Library  
State Library of NSW  
Sydney Cricket Ground Museum  
Sydney Harbour YHA & Big Dig Archaeology Education Centre  
Sydney Heritage Fleet  
Sydney Jewish Museum  
Sydney Living Museums  
Sydney Tramway Museum  
Sydney University Museums  
Tamworth Base Hospital & Health Service  
Tamworth Historical Society Inc  
Tamworth Regional Gallery & Tamworth Power Station Museum  
Temora Rural Museum  
Tenterfield & District Historical Society Inc  
The Army Museum of NSW  
The Australiana Fund  
The Hills Grammar School  
The Maritime Model Museum  
The Oaks Historical Society  
The Rocks Discovery Museum  
Thredbo Historical Society Inc.  
Thylacine Exhibition Preparation Pty Ltd  
Tongarra Museum  
Toula Museum of Australia Inc  
Tweed Regional Gallery & Margaret Olley Art Centre Inc  
Tweed Regional Museum  
UNE Heritage Centre  
Uniting Care Burnside  
Uralla Historical Society - McCrossin's Mill Museum  
UTS ART  
Wagga Wagga Art Gallery  
Walgett & District Historical Society Association Inc

Western Plains Cultural Centre  
William Clarke College  
Willoughby City Council  
Wing Hing Long Museum Inc  
Wollongong City Gallery  
Yanco Powerhouse Museum  
Yass and District Historical Society Inc.  
Zoology Museum

## Northern Territory

Batchelor Museum  
Charles Darwin University Art Collection and Art Gallery  
Katherine Museum  
Museum & Art Gallery of the Northern Territory  
National Pioneer Women's Hall of Fame Inc  
Northern Territory Library  
Nursing Museum - Charles Darwin University

## Queensland

Abbey Museum of Art and Archaeology Inc  
Artspace Mackay  
Australian Communication Exchange  
Australian Country Hospital Heritage Association Inc  
Bundaberg Steam Tramway Preservation Society Inc  
Cairns & District Chinese Association Inc  
Cairns Museum  
Cairns Regional Gallery  
Central Queensland Military Museum Association Inc  
Cherbourg Historical Precinct Group Inc  
City of Gold Coast City Planning  
Cooktown & District Historical Society Inc  
CQUniversity Australia Art Collection  
Croydon True Blue Visitor Information Centre  
Diamantina Health Care Museum  
Discover Eumundi: Heritage & Visitor Centre  
Dogwood Crossing, Miles  
Emerald Pioneer Cottage & Museum  
Fassifern District Historical Society  
Feather Clubs Association of Queensland Inc  
Gladstone Regional Art Gallery and Museum  
Gold Coast City Gallery  
Gold Coast Hinterland Heritage Museum Inc  
Griffith Artworks

Gympie Regional Gallery  
Hervey Bay Historical Village & Museum  
Hinkler House Memorial Museum and Research Association  
Historical Woolscour Association Inc  
Inglewood & District Historical Society Inc  
Innisfail & District Historical Society  
Ipswich Art Gallery  
John Flynn Place Museum  
Landsborough & District Historical Society Museum  
Logan Art Gallery  
Mackay Regional Council Libraries  
Maranoa Regional Council  
Mater Archives and Heritage Centre  
Meandarra ANZAC Memorial Museum  
Mercy Heritage Centre  
Miles Historical Village  
Moreton Bay Regional Council Museum Network  
Museum of Brisbane  
Museum Resource Centre of Southern Inland Queensland  
Nambour & District Historical Museum Assoc Inc  
National Trust of Queensland  
Nebo Museum  
Newstead House  
Noosa Museum  
North Burnett Regional Council - Mundubbera Art Gallery  
North Stradbroke Island Historical Museum  
Nursing Museum Royal Brisbane Hospital  
Perc Tucker Regional Gallery  
Pittsworth Shire Pioneer Village Museum  
Pockets of Brilliance  
Portside Centre  
Proserpine Historical Museum Society Inc  
Qantas Founders Museum  
Queensland Air Museum  
Queensland Ambulance Museums  
Queensland Art Gallery | Gallery of Modern Art  
Queensland Dairy & Heritage Museum Murgon Inc  
Queensland Maritime Museum  
Queensland Museum  
Queensland Performing Arts Centre Museum  
Queensland Police Museum  
R.D. Milns Antiquities Museum  
Redcliffe RSL  
Redland Museum Inc  
Rockhampton & District Historical Society Inc

Rockhampton Regional Council  
Royal Historical Society of Queensland - Commissariat Store Museum  
Sarina District Historical Centre  
Stanthorpe Regional Art Gallery  
Surf World Gold Coast  
The Australian Vintage Aviation Society  
The Beck Museum  
The Bundaberg & District Historical & Museum Society  
The MacArthur Museum Brisbane  
The Minerals Heritage Museum  
The Mulgrave Settlers Museum  
The Queensland Women's Historical Association  
The University of Queensland Art Museum  
Toowoomba Regional Art Gallery  
Townsville Maritime Historical Society inc  
Transport and Main Roads Heritage Centre  
University of Queensland Anthropology Museum  
University of Southern Queensland - Historical Archives  
University of the Sunshine Coast Gallery  
Victoria Barracks Historical Society, Brisbane Inc.  
Warwick Art Gallery Inc  
Wide Bay Hospital Museum Society Inc  
Winton District Historical Society and Museum Inc  
Yugambeh Museum Language & Heritage Research Centre

## South Australia

Anne & Gordon Samstag Museum of Art  
Architecture Museum - University of South Australia  
Artlab Australia  
Barossa Regional Gallery  
Bay Discovery Centre  
Botanic Gardens of Adelaide  
Carrick Hill  
City of Charles Sturt - Cultural Heritage  
Contemporary Art Centre of SA  
Embroiderers' Guild Museum  
Flinders University Art Museum  
Heritage Office - Royal Adelaide Hospital  
History Trust of South Australia  
Mannum Dock Museum of River History  
Mary MacKillop Exhibition Centre  
Mary MacKillop Penola Centre  
Melrose Districts History Society

Mill Cottage Museum  
Millicent National Trust - Living History Museum  
National Railway Museum  
National Trust of SA - Olivewood Estate  
National Trust of South Australia  
National Trust of South Australia Goolwa Branch  
Performing Arts Collection S.A.  
Port Adelaide Aviation Museum  
Riddoch Art Gallery  
South Australian Aviation Museum Inc  
The Sheep's Back Museum  
The Village, Loxton  
Uleybury School Museum  
University Collections  
Unley Museum  
Urrbrae House Historic Precinct

## Tasmania

Academy Gallery  
Arts Tasmania  
Australasian Golf Museum  
Bass & Flinders Centre  
Bass Strait Maritime Centre  
Beaconsfield Mine & Heritage Centre  
Burnie Regional Art Gallery  
Circular Head Heritage Centre  
Deloraine & Districts Folk Museum  
Devonport Regional Gallery  
Devonport RSL Jack Mason Memorial Museum  
East Coast Heritage Museum  
Friends of Ida Bay Historical Society Inc  
Furneaux Historical Research Association Inc  
Grote Reber Museum  
Josephite Mission and History Centre  
Levendale and Woodsdale History Room Inc  
Maritime Museum of Tasmania  
Museum of Old and New Art  
Queen Victoria Museum & Art Gallery  
St Helens History Room  
Tasmanian Cricket Museum  
Tasmanian Museum & Art Gallery  
Tasmanian Transport Museum Society Inc  
Tasmanian Wool Centre  
The Hutchins School

University of Tasmania Cultural Activities Committee  
Wesley Hobart Museum  
Wilmot Tourist and Progress Association

## Victoria

Alfred Hospital Nurses League Inc  
Allansford Cheese World Museum  
Ambulance Historical Society Victoria  
Andrew Ross Museum Inc  
Anglesea & District Historical Society  
ANZ Banking Museum  
Ararat & District Historical Society Inc  
Ararat Regional Art Gallery  
Archival Survival  
Arts Centre Melbourne - Performing Arts Collection  
Arts Space Wodonga  
Australasian Motor Museums Association Inc  
Australian Centre for the Moving Image  
Australian Gallery of Sport and Olympic Museum  
Australian Gliding Museum  
Australian Racing Museum  
Australian Railway Historical Society  
Australian Red Cross (Heritage)  
Axiell Australia  
B24 Liberator Memorial Restoration Fund  
Bacchus Marsh Blacksmiths Cottage & Forge Complex  
Ballarat Base Hospital Trained Nurses League  
Ballarat Tramway Museum Inc  
Banyule City Council - Hatch Contemporary Arts Space  
Barking Spider Visual Theatre  
Bay Steamers Maritime Museum Ltd  
Beechworth Honey Experience Pty Ltd  
Beleura House & Garden - The Tallis Foundation  
Benalla Art Gallery  
Benalla Historical Society  
Bendigo Art Gallery  
Berwick Mechanics Institute & Free Library Inc  
Birchip Historical Society Inc  
Blessed Sacrament Congregation & St Francis' Church  
Heritage Centre  
Bonegilla Migrant Experience  
Bright & District Historical Society  
Brighton Historical Society  
Buda Historic Home & Garden  
Bundoora Homestead Art Centre

Burke Museum & Historical Precinct	Footscray Community Arts Centre
Burrinja	Foster & District Historical Society Inc
Camperdown & District Historical Society Inc	Freemasons Victoria
Canine Museum Foundation	Friends of Churchill Island Society Inc
Casey - Cardinia Library Corporation	Friends of Hawthorn Tram Depot Inc
Castlemaine Art Gallery & Historical Museum	Friends of Kyneton Museum Inc
Caulfield Grammar School Archives	Friends Of The Cerberus
Central Goldfields Art Gallery	Friends of Westgarthtown Inc.
Centre for Cultural Materials Conservation	Geelong Football Club
CFC Archives Committee	Geelong Gallery
Charlton Golden Grains Museum Inc	Geoffrey Kaye Museum of Anaesthetic History
Chelsea & District Historical Society	George Evans Museum
Churchill Island Heritage Farm	Gippsland & East Gippsland Aboriginal Co-operative
City of Melbourne / City Gallery	Gippsland Regional Maritime Museum
City of Moorabbin Historical Society	Glen Eira City Council
City of Port Phillip Art & Heritage Team	Glen Eira Historical Society
City of Whitehorse	Glenelg Shire Council Cultural Collection
Civil Aviation Historical Society Inc	Golden Dragon Museum
Clunes Museum - William Barkell Memorial Arts History Centre	Golf Society of Australia
Coal Creek Community Park & Museum	Grainger Museum
Cohuna & District Historical Society Inc	Harry Brookes Allen Museum of Anatomy and Pathology
Community Cultural Development - City of Whittlesea	Hastings-Western Port Historical Society
Como Historic House and Garden	Hawks Museum
Conjoint Museum of RANZCO	Heide Museum of Modern Art
Creative Hat Interpretation	Henry Forman Atkinson Dental Museum
Creswick Museum	Heritage Hill Museum & Historic Gardens
Cultural Heritage & Museum Studies, Deakin University	Horsham Regional Art Gallery
Daylesford & District Historical Society Inc	Ian Potter Museum of Art
Deaf Children Australia	IAS Fine Art Logistics
Deakin University Art Collection & Galleries	Ideata (t/a InfoWand)
Delatite Wines	Incinerator Gallery
Dingley Village & District Historical Society	Islamic Museum of Australia
Donald MLA Society History & National History Group	Italian Historical Society - Co.As.It
Doncaster Templestrowe Historical Society Inc	Jewish Holocaust Centre Inc
Dromana and District Historical Society	Jewish Museum of Australia
Dromkeen	Kastellorizian Association of Victoria
Dunkeld Museum Inc	Kerang Historical Society Inc
East Gippsland Historical Society Inc	Kiewa Valley Historical Society Inc.
Echuca Historical Society Inc	Knox Historical Society
Essendon Football Club Hall of Fame	Koorie Heritage Trust
Eucalyptus Distillery Museum	Kyneton Museum - Macedon Ranges Shire Council
Euston/Robinvale Historical Society Inc.	Lake Goldsmith Steam Preservation Association Inc
Federation University Art and Historical Collections	Leongatha & District Historical Society
Fire Services Museum of Victoria	Loreto Mandeville Hall Toorak
Flagstaff Hill Maritime Village	Lyon House Museum

M.A.D.E (The Museum of Australian Democracy at Eureka)  
 Maldon Museum & Archives Association Inc  
 Mallacoota & District Historical Society Inc  
 Man From Snowy River Museum  
 Mansfield Historical Society  
 Marist Brothers Templestowe  
 Maritime Heritage Association of Victoria Inc  
 Maritime Museum of Victoria  
 Maroondah Art Gallery  
 Mary Mackillop Heritage Centre  
 Maryborough District Health Service  
 Maryborough-Midlands Historical Society Inc  
 McClelland Gallery + Sculpture Park  
 Medical History Museum  
 Melbourne Cricket Club Museum  
 Melbourne Girls Grammar School  
 Melbourne's Living Museum of the West  
 Merrigum Historical Society  
 Mildura & District Historical Society  
 Mildura Arts Centre  
 Mission to Seafarers Victoria  
 Monash University Museum of Art  
 Mornington & District Historical Society Inc  
 Mornington Peninsula Regional Gallery  
 Murtoa & District Historical Society Museum Inc  
 Museum of Chinese Australian History  
 Museum Victoria  
 Nagambie Historical Society Inc  
 National Alpine Museum of Australia Inc  
 National Gallery of Victoria  
 National Sports Museum  
 National Vietnam Veterans Museum  
 National Wool Museum  
 Nepean Historical Society Inc  
 Nillumbik Shire Council - Arts and Culture  
 NMIT Library  
 Nobelius Heritage Park & Emerald Museum  
 Old Gipps town - Gippsland Heritage Park  
 Old Melbourne Gaol - Crime & Justice Experience  
 Old Treasury Building  
 Omeo Historical Society  
 Padua College  
 Parks Victoria  
 Peterborough History Group

Phillip Island & District Historical Society Inc  
 Polly Woodside  
 Port Fairy Historical Lifeboat Station  
 Port Fairy Historical Society Inc  
 Port Melbourne Historical & Preservation Society  
 Port of Echuca  
 Presbyterian Ladies College  
 PrimeSCI!  
 Professional Historians Association (Vic)  
 Public Galleries Association of Victoria  
 Public Record Office Victoria  
 Puffing Billy Preservation Society  
 Pyramid Hill & District Historical Society  
 Queenscliffe Historical Museum Inc  
 Queenscliffe Maritime Museum Inc  
 R.A.A.F. Museum  
 Richard Kirby Archive Fair Work Australia  
 Richmond Burnley Historical Society Inc.  
 RMIT Design Archives  
 RMIT Gallery  
 Royal Agricultural Society of Victoria  
 Royal Australasian College of Surgeons  
 Royal Australian & NZ College of Obstetricians &  
 Gynaecologists (RANZCOG) Museum  
 Royal Botanic Gardens Melbourne Library  
 Royal Children's Hospital Archives  
 Royal Historical Society of Victoria Inc  
 Royal Melbourne Hospital Archives  
 Running Rabbits Military Museum  
 Sacred Heart College  
 Santa Maria College  
 Scout Heritage Victoria  
 Seaworks Foundation  
 Shepparton Art Museum  
 Shepparton Heritage Centre Inc  
 Shrine of Remembrance  
 Slovenian Association Melbourne  
 St Kilda Historical Society  
 Stanley Athenaeum & Public Room  
 State Library of Victoria  
 Stawell Historical Society Inc  
 Sunshine & District Historical Society  
 Surfworld Torquay  
 Swan Hill Regional Art Gallery  
 Talbot Arts & Historical Museum Inc

Tarrawarra Museum of Art  
 TASHCO Systems Pty Ltd  
 Tatura and District Historical Society  
 The Australian Cartoon Museum  
 The Australian National Aviation Museum  
 The Central Highlands Tourist Railway  
 The Centre for Cultural Materials Conservation  
 The Cyril Kett Optometry Museum  
 The Dax Centre  
 The Duldig Studio  
 The Gallery @ BACC  
 The Johnston Collection  
 The Peninsula School  
 The Pioneer Settlement  
 The Sovereign Hill Museums Association  
 The Wilderness Society Victoria Inc  
 Town Hall Gallery  
 Trans-Australia Airlines Museum  
 Trinity College - Art & Archives  
 Ukrainian Association Sunshine  
 Uniting Church Archives  
 Victoria Police Museum  
 Victorian Jazz Archive Inc.  
 Victorian Telecommunications Museum Inc  
 Villa Alba Museum Inc.  
 Walhalla Heritage & Development League Inc  
 Wandin and District Historical Museum Society Inc.  
 Wangaratta Art Gallery  
 Wangaratta Historical Society  
 Warracknabeal Historical Society  
 Warrnambool & District Historical Society  
 Warrnambool Art Gallery  
 Western Bulldogs  
 Whitehorse Historical Society  
 Woody Yaloak Historical Society Inc  
 Wonthaggi & District Historical Society Inc  
 Woods Farming & Heritage Museum  
 Yackandandah & District Historical Society  
 Yarra Ranges Regional Museum - Shire of Yarra Ranges

## Western Australia

AMMPT Western Region Inc  
 Army Museum of Western Australia Foundation  
 Art Gallery of Western Australia

Art on the Move  
 Artgeo Cultural Complex  
 Augusta Historical Museum  
 Avondale Discovery Farm  
 Bayswater Historical Society  
 Beacon Men's Shed  
 Benedictine Community of New Norcia  
 Berndt Museum  
 Bindoon Historical Society and Museum  
 Birdwood Military Museum Inc  
 Bridgetown Historical Society Inc  
 Brookton & Districts Historical Society  
 Broome Historical Society  
 Broomehill Historical Society  
 Bruce Rock Museum  
 Bunbury Cathedral Grammar School  
 Bunbury Historical Society Inc  
 Bunbury Museum and Heritage Centre  
 Busselton Historical Society Inc  
 Canning Districts Historical Society Inc  
 Carnamah Historical Society  
 Chisholm Catholic College  
 City of Belmont  
 City of Fremantle Art Collection  
 City of Gosnells Museum - Wilkinson Homestead  
 City of Joondalup  
 City of Kalgoorlie-Boulder  
 City of Melville Museum & Local History Service  
 City of Perth Art & Cultural Heritage Collection  
 City of South Perth Historical Society  
 City Of Stirling - Mt Flora Regional Museum  
 City of Vincent  
 City of Wanneroo/ Wanneroo Cultural Centre and Library  
 Collie Heritage & Menshed Group Inc  
 Community Group of Greenough  
 Cunderdin Museum  
 Dowerin District Museum  
 Eastern Goldfields Historical Society  
 Ex Victoria District Hospital Staff Association  
 Fellowship of Australian Writers WA  
 Fire & Emergency Services Education & Heritage Centre  
 Fremantle Prison  
 Freshwater Bay Museum  
 Geraldton Historical Society Inc  
 Geraldton Regional Art Gallery



Harvey Districts Historical Society Museum  
Heritage Perth Inc.  
Historical Society of Cockburn Inc  
History House Museum  
Institute of Sisters of Mercy of Australia & Papua New Guinea Community Southern A  
Irwin District Historical Society  
Jarrahdale Heritage Society  
John Curtin Gallery  
Juluwarlu Aboriginal Corporation  
Jurien Interpretation Centre Inc  
Kalamunda & District Historical Society  
Katanning Art Gallery  
Kojonup Visitor Centre  
Koorda & District Museum & Historical Society Inc  
Kununurra Historical Society  
Kwinana Heritage Group Inc  
Lake Grace Visitor Centre  
Lawrence Wilson Art Gallery  
Machinery Preservation Club of WA Inc  
Mandurah Community Museum  
Mandurah Historical Society Inc  
Margaret River & Districts Historical Society Inc.  
Methodist Ladies' College  
Morawa District Historical Society  
Mowanjum Art & Culture Centre  
Mundaring District Museum  
Murray Districts Historical Society Inc  
Murray Military Museum  
Museum of Performing Arts, AEG Ogden (Perth) Pty Ltd  
Newcastle Gaol Museum  
Newdegate Hainsworth Museum  
Northam Army Camp Heritage Association Inc  
Northam Heritage Forum Inc  
Northampton Historical Society Inc.  
Old Court House Law Museum  
Old Kobeelyans' Association  
Ongerup & Needilup District Museum  
Penrhos College  
Perth College  
Perth Institute of Contemporary Arts  
Plantagenet Historical Society  
RAAFA Aviation Heritage Museum of WA  
Rail Heritage WA

Ravensthorpe Historical Society Inc  
Residency Museum York  
Rockingham District Historical Society  
Rottneest Island Authority  
Royal Perth Hospital Museum  
Royal Western Australian Historical Society (Inc)  
Scotch College Inc  
Scout Heritage Centre of Western Australia  
Shire of Leonora  
Shire of Manjimup - Timber & Heritage Park  
Shire of Sandstone  
Sisters of Mercy - Perth  
Sisters of St John of God Heritage Centre Broome  
State Library Foundation of Western Australia  
Subiaco Museum  
Swan Guildford Historical Society Inc  
The Embroiderers Guild of WA (Inc)  
The Friends of Eden Vale Inc  
The Great Beyond Explorers Hall of Fame  
The Grove Library  
The Mental Health Museum W A  
The Merredin Museum & Historical Society Inc  
The Returned & Services League of Australia WA Branch  
The Royal Australian Artillery Historical Society of WA  
The St John Ambulance Museum  
The Tractor Museum of WA  
The Western Australia Police Historical Society  
WA Medical Museum  
Waroona Historical Society  
Western Australian Cricket Association (WACA) Museum  
Western Australian Museum  
Whale World  
Wheatbin Museum  
Whiteman Park  
Wongan Hills & District Museum and Historical Society  
Yarloop Workshops Inc  
Yilgarn History Museum  
Young Australia League Inc

## International

The Dowse Art Museum  
Tru-View  
Vernon Systems Ltd